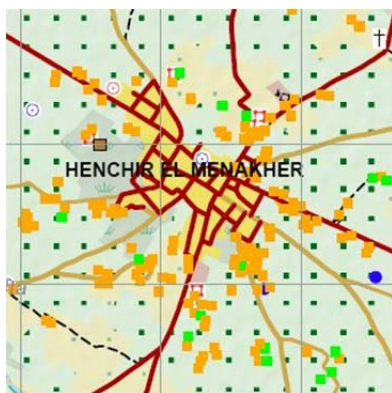


References:

Project name	Detailed Topographic Mapping
Description	Topographic Mapping with high resolution remote sensing data and GIS.
Countries	North Africa, Mediterranean and Near East, Central and Southern Africa, Saudi Arabia
Date start / end	2006 ongoing
Client	Infoterra GmbH Deutschland
Customer	
Financing organisation	



Topographic Mapping based on high resolution remote sensing data and a vector data base at high resolution scale. Responsible for the interpretation, quality control, the coordination of project partners and the training of the interpreters.

Project name	Copernicus Initial Operations 2011-2013 – Land Monitoring Service Local Component: Riparian Zones.
Country	European Union
Date start / end	2015
Client	Geoville (Austria)
Customer	European Environment Agency
Financing organisation	

Riparian Zones



Land Cover/ Land Use

Tasks:
Elaboration the workflow of image interpretation, training the interpreters.

land.copernicus.eu/local/riparian-zones

Project name

Installation of a Geographic Information System (GIS) to support the water services.

Country

DR Kongo

Date start / end

2014

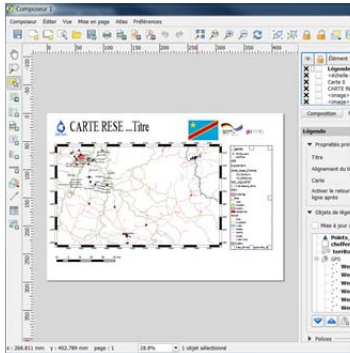
Client

Projet RESE – Projet to support the water sector reform in the DR Kongo

Customer

GIZ

Financing organisation



Tasks:

Elaboration of a data base from available field data

Creation of a water information system based on Software QGIS.

Edit Land Use and Land Cover Map based on available maps and data.

Project name

Mapping Risk of Flooding of the Niger Valley.

Description

Mapping of Risk of Flooding based on high resolution satellite imagery.

Country

Niger

Date start / end

2014

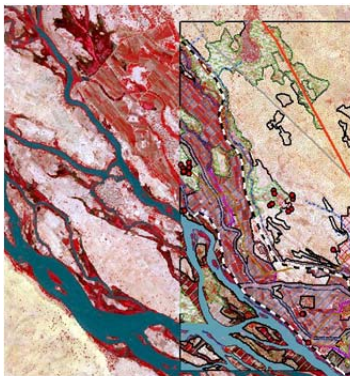
Client

Deutsche Gesellschaft für internationale Zusammenarbeit GmbH (GIZ)

Customer

GIZ

Financing organisation



Tasks:

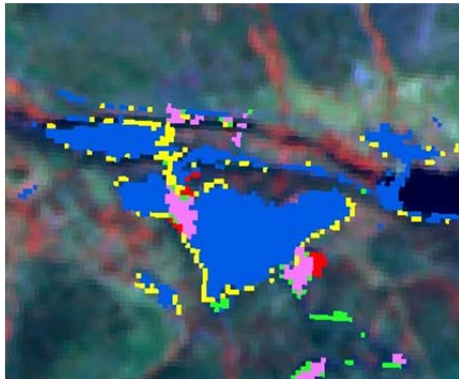
Elaboration of a data base with the help of high resolution satellite imagery with the components:

Land Use and Land Cover Map

Map of danger of flooding

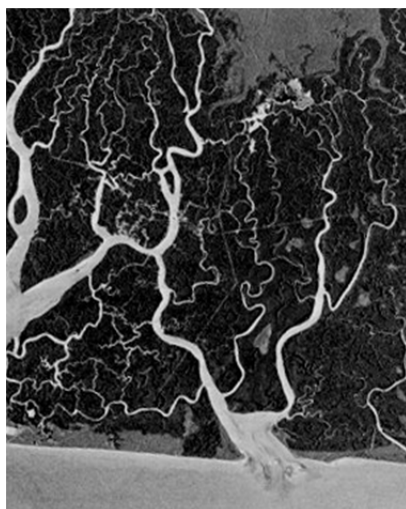
Floodrisk Map.

Project name **GMES Fast Track Service Sealing**
 Description European raster data set for the sealing degree
Country **Europe**
 Date start / end 2007 / 2010
 Client Infoterra GmbH Deutschland
 Customer European Environment Agency EEA
 Financing organisation



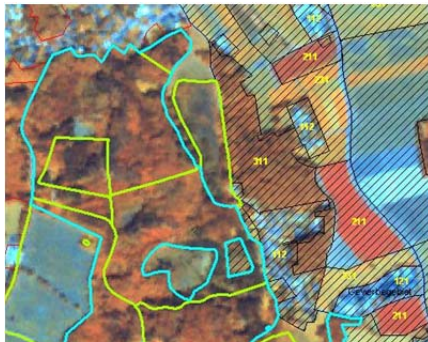
In all three three project phases:
 the first edition 2006, the upgrade and update 2009,
 the tasks where support in product specification and
 interpretation workflow, training the interpreters and
 support in quality control.

Project name **Training courses in Topographic Mapping and Thematic Mapping based on TerraSAR X – Data.**
 Description Training courses for international customers.
Country **Germany, China, Nigeria**
 Date start / end 2007 - 2010
 Client Infoterra GmbH Deutschland
 Customer Infoterra GmbH Deutschland
 Financing organisation



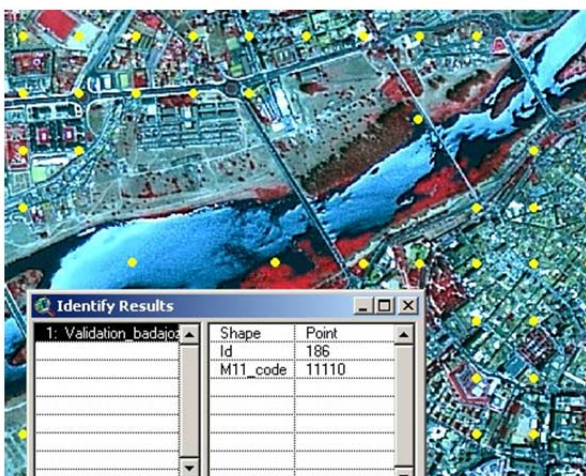
The training contents were:
 Introduction in topographic mapping:
 generate layout and thematic content of mapping products,
 establish the vector data base and geoinformation system:
 training in supervised image interpretation

Project name	BDLM-DE - CORINE 2009
Description	National Data Base of CORINE 2009 Germany on the basis of the detailed national topographic data base ATKIS DLM-DE
Country	Deutschland
Date start / end	2009 - 2010
Client	Infoterra GmbH Deutschland
Customer	Bundesamt für Kartographie und Geodäsie
Financing organisation	



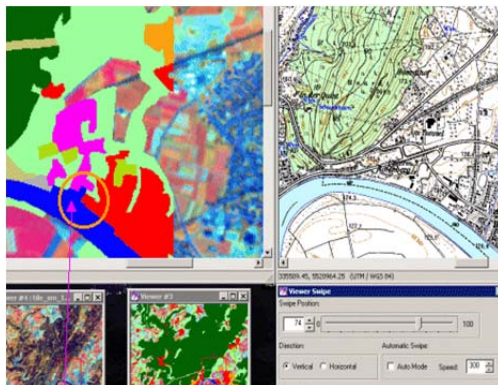
The responsible tasks were:
 supervising the Interpretation;
 establish workflow and compile the mapping guide;
 training the interpreters;
 establish workflow for quality control

Project name	GMES Service Urban Atlas
Description	Detailed mapping of the European urban zones applying high resolution satellite images.
Country	Europe
Date start / end	2006 - 2009
Client	ETC-LUSI, Directorate general for Regional Policy (DG Region)
Customer	Directorate general for Enterprise and Industry (DG Enter)
Financing organisation	



The responsible tasks were:
 elaborate the mapping product;
 compose the mapping guide;
 training of chief interpreters and interpreters of the collaborating service providers;
 assure quality control of the product and the workflow at the service providers.

Project name	GSE-Land: Stage 2 of the Earth watch GMES Services
Description	Definition and pilot-production of Land Use / Land Cover Data, Sealing Degree and Urban Atlas for the European GMES (Global Monitoring of Environment and Security) Initiative.
Country	Europe
Date start / end	2005 / 2008
Client	European Topic Centre – Land Use and Spatial Information (ETC-LUSI)
Customer	
Financing organisation	(ETC-LUSI)



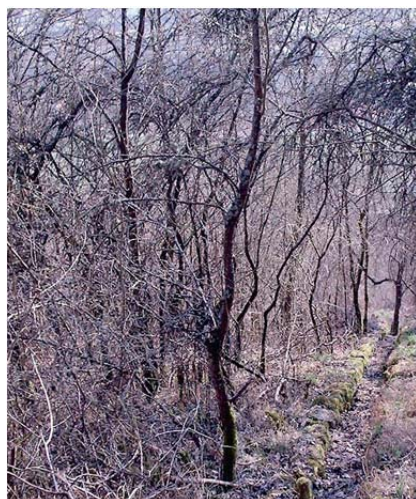
The responsible tasks were:
supervision of the interpretation;
definition of work packages and workflows;
training the interpreters;
assure the quality control.

Project name	CORINE –Coordination of Information on the Environment
Description	Mapping land cover / land use in Europe for the EEA.
Country	Germany
Date start / end	1995-1996, 2001-2002, 2007
Client	IFP Offenbach, Infoterra GmbH Deutschland
Customer	Umweltbundesamt Deutschland
Financing organisation	



The responsible tasks were:
supervising the interpretation for the first inventory in CLC1990 and the updates CLC2000 and CLC2006;
interpretation and digitizing the satellite images and map data;
create the GIS data base;
monitoring and quality control.

Project name	Concepts and strategies for the development of ecologic and economic sound cultural landscapes in regions of historical but still functional terraced vineyards.
Description	Landscape analysis and planning
Country	Germany
Date start / end	2005 / 2008
Client	Büro für Grünplanung
Customer	Research Study
Financing organisation	



Study about the potentials of further development of historical landscapes.
the Results were published in:
Elsen, Th.v. (Hrsg.), 2005, Einzelbetriebliche Naturschutzberatung – ein Erfolgsrezept für mehr Naturschutz in der Landwirtschaft.

Project name	Hand book for integrated water management in the MENA - Region
Description	Editing an online hand book and managing the knowledge data base.
Country	Region of the Mediterranean and Near East
Date start / end	2003 / 2004
Client	GIZ former GTZ (Deutsche Gesellschaft für Technische Zusammenarbeit)
Customer	GIZ
Financing organisation	



The responsible tasks were:
collection and edition of articles,
programming the internet platform;
moderation the discussions in fora and seminars,
project management.